



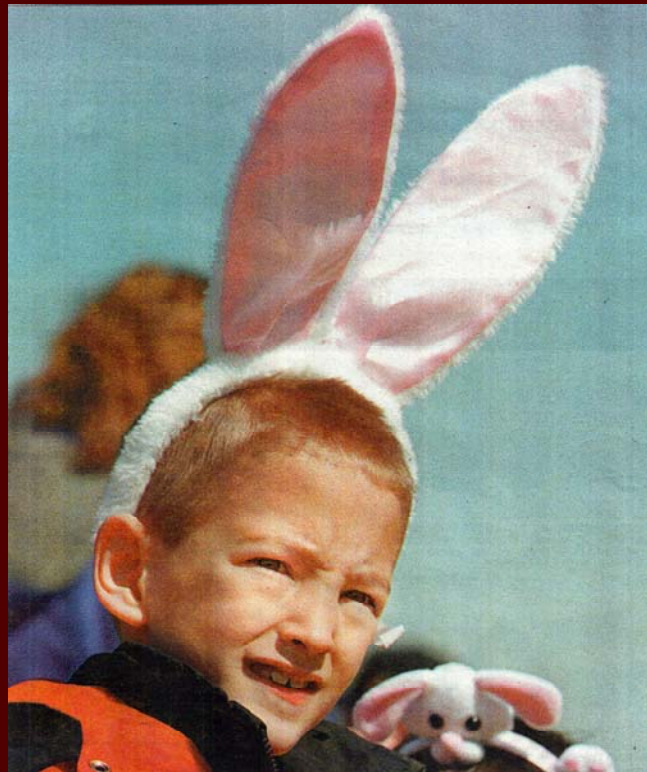
Wheeling Historical
Society and Museum
Newsletter

Spring Is Almost Here

March 2016

Volume 25, Issue 1

The Wheeling Historical Society and Museum celebrates the link between the past and the present. The museum is a cooperative effort of the Village of Wheeling, Wheeling Park District, Indian Trails Public Library.



HAPPY ST. PATRICKS DAY

HAPPY EASTER

MARCH 23rd MONTHLY MEETING IS "THE WRECK OF THE EDMOND FITZGERALD". PRESENTED BY ROCHELLE PENNINGTON. THE LITTLE BLACK DRESS PROGRAM IS RESCHEDULED FOR APRIL 27th

'EARS LOOKING AT YOU' from Wheeling Countryside 4-1-99

Seven year old Patrick Hremes dons the appropriate headgear during the Wheeling Park District's annual Holiday Hunt held at Childerley Park. Good weather meant great conditions for the candy and egg search.

We Mourn the Passing of the Society's and Wheeling's Friends

George Hieber:

Wheeling Village Hall was full Monday night for the first ever George Hieber Citizenship Award presentation. Both Hieber's family members and the board of trustees took time to honor the well-known resident for who the award is named after. Hieber was a fixture at almost every regular village board meeting until he died Thursday, March 3 at the age of 81. Often, he would speak at board meetings to promote blood drives and Knights of Columbus activities.



Wedge Hancock:



We will sorely miss the many talents of Wedge. His woodworking craftsmanship and overall helpfulness at the museum made him a valuable asset. Our deepest appreciation and sympathy are extended to the Hancock family. He will be missed at Lollipop Lane where he helped repair displays and count and kept track of visitors during the nine day event.

Richard (Dick) Dorband: Our deepest sympathy to Pam Dorband on the loss of her husband Dick who was a Fire Lieutenant for the City of Chicago and a construction contractor.

Message From The President

Bill is under the weather this month, and there will not be a presidents message. We'd like to thank everybody who volunteered for LolliPop Lane and the White Elephant Auction. Both were a great success. Just a reminder, elections will take place in April for our officers .

The Curator's Corner — Patti Steilen



It's time to get ready to open the Museum for the 2016 season. The doors will open on April 3rd and close on October 9th. Anyone interested in sitting on a Sunday afternoon can contact me at (847) 924-4473.

We are in the midst of changing two of our displays. Anyone willing to donate decorative plates for our display can contact me at the above number.

We would like to see our membership increased. If you know of anyone who is interested in becoming a member please contact me. We can also use some muscle to help clean out the carriage house since we will be hosting the June N.E.I.L meeting. Members of other North Eastern Illinois Museums will be visiting our campus with the topic for the program to be picked at a later date.



Lost and Not Found

Does anyone have any information about this photo., either about the Wheeling Transfer Wagon, or its occupants?

Please give us a call and any memories about them.

LOST WORDS OF OUR YOUTH

Heavens to Murgatroyd! Would you believe the email spell checker did not recognize the word murgatroyd?

Words gone as fast as the buggy whip! Sad really! The other day a not so elderly (65) lady said something to her son about driving a Jalopy and he looked at her quizzically and said what the heck is a Jalopy? She knew she was old but not that old.

WHERE DO FISH KEEP THEIR MONEY? (In a river bank)

A hangover is the wrath of grapes!

Q: Just how much free time does a retiree have?

A: Enough to actually stay on the line until her call to the HMO, government agency, or computer help line is answered by a human being.

Being Over the Hill' is much better than being under it!

WHEELING HISTORICAL SOCIETY

Located in the
Wheeling Park
District's
Chamber Park
251 Wolf Road
Wheeling Illinois

2014-2015 OFFICERS

President:

Bill Hein

Vice President:

Elaine Simpson

Treasurer:

Marilyn Chromy

Secretary:

Christine Brady

DIRECTORS

Celeste Kuta

Terry Steilen

Joan Wiener

Curator

Patti Steilen

Web Site:

Terry Steilen

Newsletter Editor

Patti Steilen

Communications

Celeste Kuta

Program Events

Joan Wiener

Wheeling Park District

Liaison

Undefined



COOKS CORNER

CHEESEPIE TOPPED WITH RASPBERRIES OR STRAWBERRIES

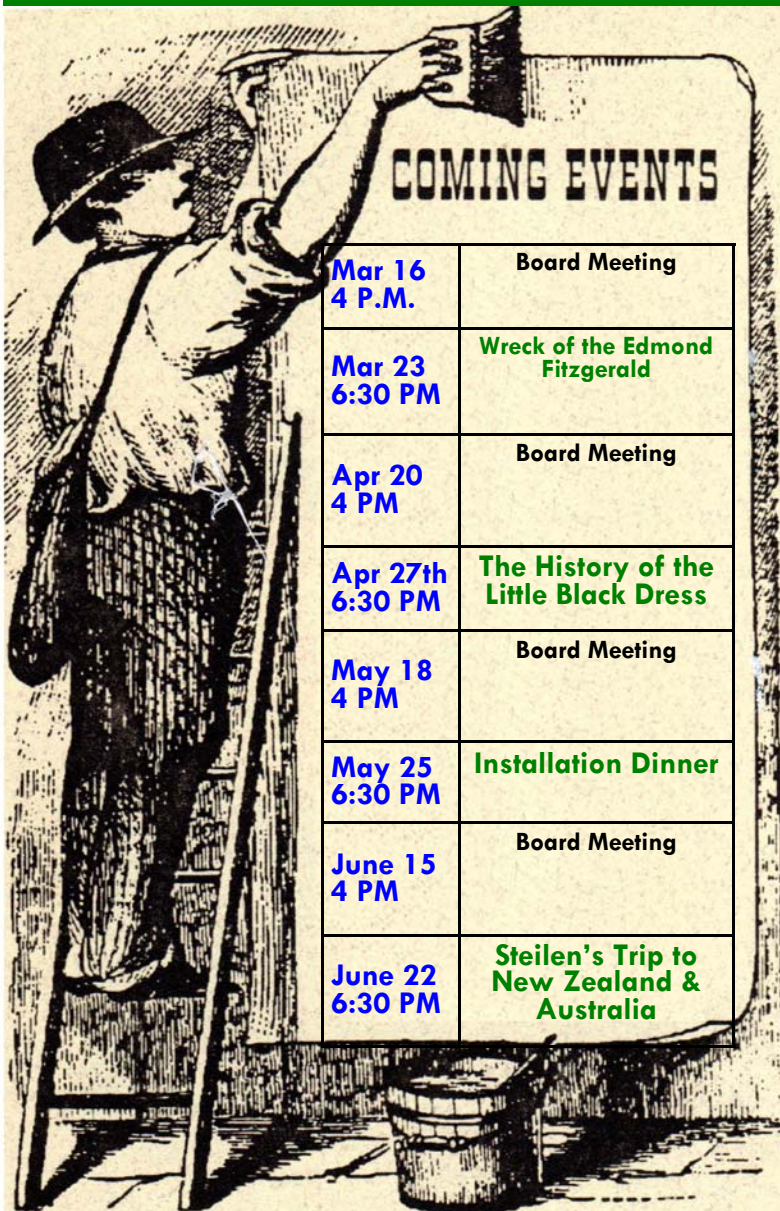


Ingredients:

- Fresh raspberries or strawberries
- 8 oz. cream cheese
- 1/3 cup sugar
- 1 cup sour cream
- 2 tsp vanilla
- 8 oz. cool whip
- graham cracker crust

Directions:

- Beat cream cheese until creamy. Beat in sugar. Blend sour cream and vanilla.
- Fold in cool whip
- Spoon into crust
- Top with raspberries or strawberries and refrigerate



Times Have Changed

From the Countryside Reminder 1996

Wheeling's Liquor Commission, in a move to curtail use of video poker machines in the village, voted February 8th to close Hangouts Bar for three weeks.

The bar owner appeared recently before the Liquor Commission on charges that he had two video poker machines in his tavern and the bartender paid out \$30 winnings to an undercover Cook County sheriffs detective last spring.

It is illegal to have such machines in the village, let alone payout gambling winnings said the Wheeling Police Chief.

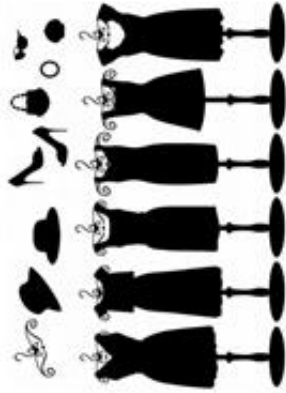
Now you can walk into any bar or restaurant and gamble on video machines legally. The payouts are much bigger then \$30!





Monthly Meeting
Wednesday, April 27, 2016
6:30 pm

“Decades of Dresses Fashion Show:
The Little Black Dress”



Vintage clothing collector Ruth Thomas will present and model outfits from her collection, focusing on the famous “little black dress” from 1885 through 1991.

Chamber Park Church Building
251 North Wolf Road
Wheeling, IL 60090
847.537.3119



Monthly Meeting
Wednesday, March 23, 2016
6:30 pm

“The Wreck of the
Edmund Fitzgerald”



Rochelle Pennington will tell the remarkable story of the wreck of the Edmund Fitzgerald, the well-known Great Lakes shipwreck that occurred in rough water on November 10 1975 with the loss of all 29 officers and crew.

Chamber Park Church Building
251 North Wolf Road
Wheeling, IL 60090
847.537.3119

