



Historical Society Newsletter

Spring

May 2015 Volume 24, Issue 3

WHEELING HISTORICAL SOCIETY

Located in the
Wheeling Park
District's
Chamber Park
251 Wolf Road
Wheeling Illinois

2014-2015

OFFICERS

President:

Bill Hein

Vice President:

Elaine Simpson

Treasurer:

Marilyn Chromy

Secretary:

Christine Brady

DIRECTORS

Celeste Kuta

Terry Steilen

Joan Wiener

Curator

Patti Steilen

Web Site:

Terry Steilen

Newsletter Editor

Patti Steilen

Wheeling Park District

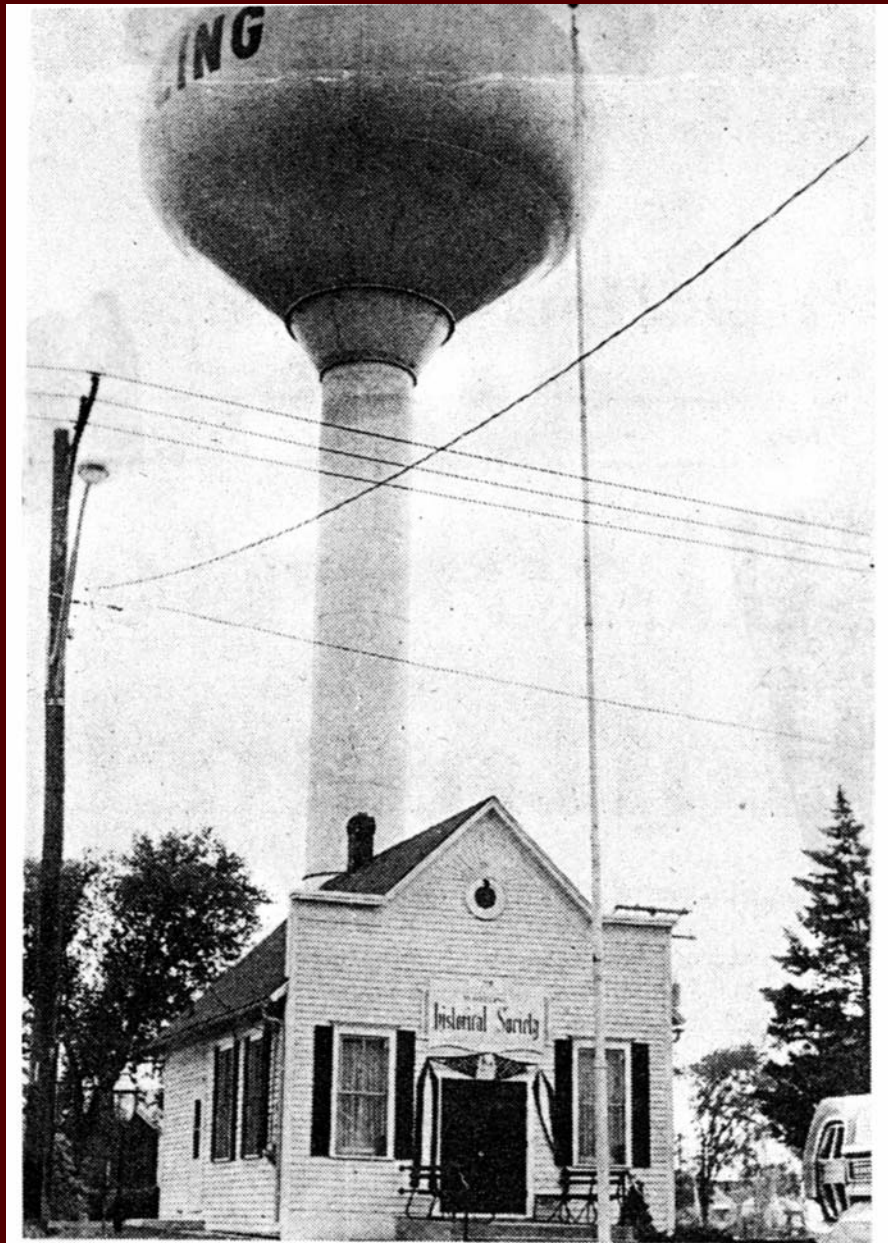
Liaison

Undefined

The Wheeling Historical Society and Museum celebrates the link between the past and the present. The museum is a cooperative effort of the Village of Wheeling, Wheeling Park District, Indian Trails Public Library.

5
0
Y
E
A
R
S
O
F
C
H
A
N
G
E

5
0
Y
E
A
R
S
O
F
H
I
S
T
O
R
Y



Incorporated into a village in 1894, Wheeling built a small village hall for its new government. Above, the old village hall, now the Wheeling Historical Society, is dwarfed by the modern Water tower and electric lines. This fall, Wheeling will move into it's third village hall, on Dundee Rd.

Message From The President

From The President's Desk.....

Honoring the Men and Women who Served Our Nation Wheeling Historical Society is celebrating our 50th anniversary.

This year we have joined with the Wheeling AMVETS Post 66 inviting you in honoring and celebrating the service of our military veterans on Memorial Day May 25, 2015.

“The Parade of Honor” for our Veterans will be a short walk from the corner of Dundee Road & Milwaukee Ave west to Wolf Road to Chamber Park where we will hold a special service in honor our military. Starting Time 11: am. The Wheeling High School Marching Band will lead the way!

Don't forget our Settlers Day Picnic at Chamber Park following the parade. Pack a picnic, bring your family, friends. See your village news letter for more information. Special flyers are at local business, Wheeling Park District CRC, Indian Trails Library & Village Hall.

Don't want to cook?? Market Square Restaurant & Kentucky Fried Chicken KFC have special discount picnic coupons for you. Get them at the Chamber Park or at participating restaurants. We promise you a fun, exciting and fulfilling day honoring the men and women who have valiantly served our nation.

Bill Hein President....



LOOKING BACK TO THE PAST



WHEELING HISTORICAL SOCIETY
 THE
WHEELING HISTORICAL SOCIETY
 INVITES YOU TO ATTEND THE DEDICATION
 OF THE

WHEELING HISTORICAL MUSEUM

SUNDAY OCTOBER 20, 1968 2PM
 84 S. MILWAUKEE AVENUE
 WHEELING, ILLINOIS

The Curator's Corner — Patti Steilen



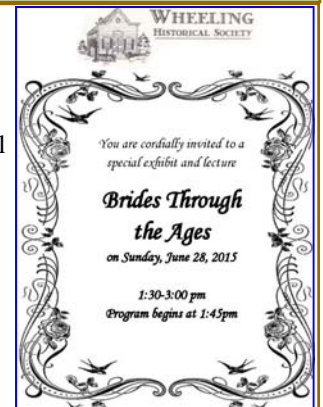
A warm welcome to Celeste Kuta, our new Director. She brings her expertise and experience from working at Indian Trails Library. She will be a big help with the communications work that we do.

With the opening of the museum we have finished the doll display. Thanks to all our members who loaned us their dolls. We are geared up for the Founders Day Picnic and the Antique Wedding Dress presentation. All the information for the Founders Day Picnic and Parade are on the last page of this letter. We hope all our members attend help us celebrate. Bring a picnic basket and enjoy the fun.

We are in the process of cleaning out files in the basement. While looking for one file we discovered something that was misfiled and we found old information on Mr. Sweet and George Strong along with maps and copies of deeds from the purchase of his property. I find it amazing how detailed the maps and deeds are from the early 1800's.

The bridal show is in its planning stages and is moving along nicely. It should be a fun afternoon learning about weddings and trousseaus through the 1900's.. We will be serving wedding cake and coffee and lemonade punch. We hope to have a big turnout for this event.

Thank you to everyone who has signed up to sit at the museum on Sundays.



COOKS CORNER



Strawberry Shortcake French Toast



- 1 loaf (15-16 oz.) day-old challah or egg bread
- 6 eggs
- 1 1/2 cups milk
- 2 cups heavy cream
- 9 Tbs. sugar
- 4 tsp. vanilla extract
- 3/4 tsp. ground cinnamon
- 1/4 tsp. salt
- 1 can (21 oz.) strawberry pie filling
- 1/2 tsp. grated orange zest
- 1 1/2 cups strawberries, sliced

Trim and discard 1/4 from each end of bread; cut remaining bread into 16 (1/2" thick) slices. Reserve. Coat 2 1/2 qt. baking dish with cooking spray. In bowl, beat together eggs, milk, 1 cup cream, 6 Tbs. sugar, 2 tsp. vanilla, 1/2 tsp. cinnamon and

salt. Dip 7 bread slices in egg mixture until thoroughly coated (do not let bread soak for more than 30 seconds; arrange in baking dish. Pour 1/2 cup remaining egg mixture over bread. Combine pie filling, 1 tsp. vanilla and orange zest. Spread over bread. Dip remaining bread slices into remaining egg mixture. Place on top of pie filling mixture, overlapping slightly. Pour remaining egg mixture over top. Cover with plastic wrap. Refrigerate until egg mixture is absorbed into bread, 2 hours. Preheat oven to 350°F. Combine 1 Tbs. sugar and remaining 1/4 tsp. cinn'amon; sprinkle over bread. Bake 45-50 minutes or until set in center, covering with foil if browning too quickly. Cool if desired.

Just before serving, beat remaining 1 cup cream, 2 Tbs. sugar and 1 tsp. vanilla until stiff. If desired, transfer to pastry bag fitted with large star tip. Pipe or spoon onto French toast and garnish with sliced strawberries.

From Picnics Of The Past

AN OLD-FASHIONED ELEGANT PICNIC FOR 8

- Meat pâté or terrine
- Glazed roast pheasant*
- Green bean salad with dill vinaigrette
- Eggs stuffed with chicken liver mousse*
- Parker House rolls*
- Cheese and fruit
- Exposition orange cake*

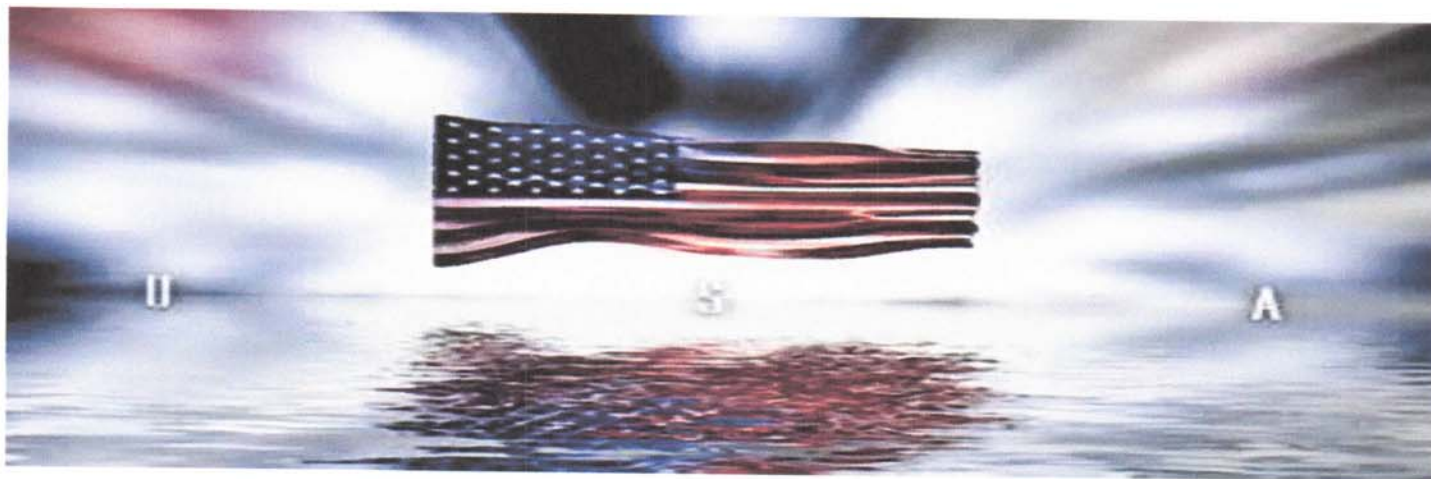
AN OLD-FASHIONED SIMPLE PICNIC FOR 8

- Relish platter with radishes, carrots, celery, corn relish and chow-chow*
- Egg salad and ham salad sandwiches
- Alice's hot potato salad*
- Cheese and fruit
- Rhu-berry cobbler*



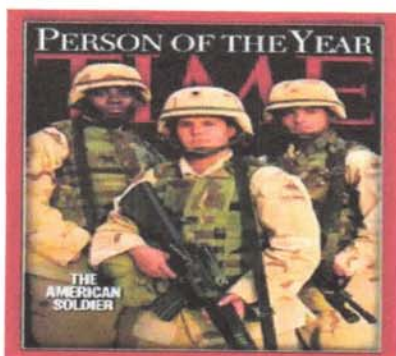
2015 CALLENDAR OF EVENTS

- May 25th Parade & Founders Day Picnic 11AM
- May 27th Installation Dinner
- June Wedding Dress Display & Talk
- July No Meetings, Museum is open on Sundays 2-4pm



MEMORIAL DAY PARADE WHEELING ILLINOIS

11 A M Milwaukee Ave & Dundee Road to Wolf Road
to Chamber Park 251 N Wolf Road



Memorial Day Parade Featuring the Award winning Wheeling High School Marching Band will be held on Dundee Road starting at Milwaukee Ave. A Memorial Wreath will be placed at the southeast corner which has the flags of Americas Military forces. The parade will proceed west to Wolf Road and turn north to the Wheeling Park District's Chamber Park home of the Museum and Historical District. The Memorial Day Services by Post 66 Am Vets & Tony Alteri, Memorial Day Address by Village President Argiris followed by a Settlers Day Picnic. Bring your family Neighbors & Friends. Pack a picnic basket. Ice Cream Deserts will be provided by the Society. No Alcoholic beverages allowed in the park. The Parade will start Monday, May 25th at 11:00 A.M. There will also be tour and an open house for visitors to see the museum and its grounds. If you would like to participate in the parade contact Bill Hein 847-650-8985, Terry Steilen 847-537-7287, Marilyn Chromy 847-537-5714.

This is a Wheeling
Historical Society Event

