



251 North Wolf Road • Wheeling, Illinois 60090

WHEELING HISTORICAL SOCIETY

APRIL -2012

MESSAGE FROM THE PRESIDENT



Dear Members and Friends :

It looks like Spring is here and early this year. The flowers and trees are beautiful. Hope it stays nice and not too hot too early. But this is Illinois and it can change often.

I want to thank all of our members and friends who attended the Decades of Dresses. I heard only good comments on the program. Approximately Thirty or more attended. Ruth Thomas and Cloe Berg gave a good glimpse of how dresses have changed over the years.

April we have Jim Bohienstengel from Galerie St. James again this year. He was here last year and we enjoyed his interpretation of the antiques that were brought in for appraisal. He will be here on Wednesday April 25th at Chamber Park, the night of the meeting. Bring your things to be appraised .

The cost will be \$3.00 per item and limit of eight items per person, no oriental rugs. If you have furniture please just bring a picture of the item. Bring your friends. The general meeting will be held after the program. The board meeting just before the program.

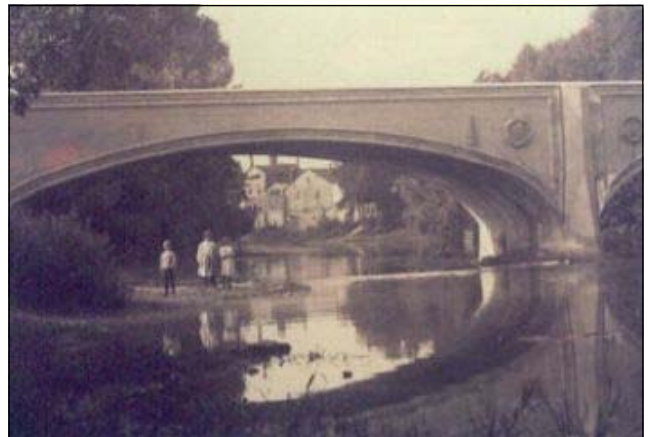
I want to wish everyone a Happy Easter and hope to see you at the next meeting. Again its Wednesday April 25th at 7:00 P.M.

Hope to see you there.

Historical Yours:

Joan Wiener

President Wheeling Historical Society



Does anyone recognize this picture? Clues will be given in the next newsletter. (Hint) It's taken from the North Side looking to the south. Do you know the name of the buildings?

ANSWER: The river was low during dry spells, revealing sand bars where children played. Looking south beneath the Dun-dee Rd. bridge, the Perolat brewery may be seen on the west bank.

Happy Easter



The Easter bunny first arrived in America in the 1700s with German immigrants who settled in [Pennsylvania](#) and transported their tradition of an egg-laying hare called "Osterhase" or "Oschter Haws." Their children made nests in which this creature could lay its colored eggs. Eventually, the

custom spread across the U.S. and the fabled rabbit's Easter morning deliveries expanded to include chocolate and other types of candy and gifts, while decorated baskets replaced nests. Additionally, children often left out carrots for the bunny in case he got hungry from all his hopping.

**WHEELING
HISTORICAL
SOCIETY**

Located in the
Wheeling Park
District's
Chamber Park
251 Wolf Road
Wheeling, Illinois

2011–2012

OFFICERS

President

Joan Wiener
Vice President

Bill Hein
Treasurer

Marilyn Chromy
Secretary

Christine Brady

DIRECTORS

Barbara Forke

Elaine Simpson

Becky Vogel



Curators

Patti Steilen, Curator
Donna Vallas, Assistant

Web Site

Terry Steilen

Newsletter Editor

Donna Vallas



Wheeling Park District



**Swedish Pancakes
Ingredients**

- 1 cup of flour
- 2 Tbsp. of sugar
- 1/4 Tsp. of salt
- 3 Eggs
- 1 1/2 Cups of milk
- 1 Tsp. of vanilla

DIRECTIONS

All ingredients in blender. Then blend for approximately 1 minute. Place on griddle. Get the griddle hot. Pour mixture to cover griddle completely. Brown on bottom side. With spatula gently lift pancake and flip it over. Garnish with your favorite fruit or syrup and whip cream (if desired). Yumm.....

Curator's Report

I've been contacted by the Tarkington School to come in and talk about the museum and bring some artifacts along. I'm trying to set up a date in late April.

The new displays are up in the museum:

1. Chicago Executive Airport
2. Girl Scouts 100th. Anniversary

Just a reminder that we open the museum on Sunday April 15th. From 2 until 4 PM.

Carolyn Kolssak brought in an old beer bottle, found on the funeral parlor property along with several pictures that are in Wheeling Through The Years book. A frontier style false front characterized the Bollenbach store of the turn of the century, and six steps led up to the first floor. In 1918 Edward Welflin took over and the roof became Greek Revival with eaves turned inward. The front was extended, and entry was only one step up from the sidewalk. From a general store it had progressed to a variety store and in its last years it was known as Welflin's Sports Store. There were several other pictures from the book.

We hope to see you in the museum during this years 2012 season.

Visit our website at www.WheelingHistoricalSociety.com



UPCOMING EVENTS AROUND TOWN



Wilmette Historical Society:



- STROLLER WALK—"Downtown Wilmette" Saturday June 9th. 10-11:30 AM. Call 847-853-7666 or email museum@wilmette.com to reserve a spot.



- "GREEN" HOMES EVENT—"Eco Build Architectural Bike Tour" Saturday June 16th.



1-5PM. \$15 Call 847-853-7666 or email museum@wilmette.com to reserve a spot.



- WALKING TOUR—"Willmett's Lakefront" Saturday July 14th. 9:30 AM \$5.00 Call 847-853-7666 or email museum@wilmette.com to reserve a spot.



Arlington Heights Historical Society:



- ARLINGTON HEIGHTS HOUSE WALK AND TEA Sunday June 10th. 12:00—5:00 PM



Spring 1978

Spring Special
O' Brien
Liquid Velvet Latex and Alkyd Flat
\$3.99 Gal. \$1.75 Qt.
Discontinued Colors

White Crest White Latex \$3.99 Gal.

FREE Drop Cloth With White Paint.

Wheeling Paint, Glass and Plywood
483 S. Milwaukee Ave. Wheeling
LE 7-2777



April 25, 2012
7pm Wednesday



Galerie St. James will again be at Chamber Park 251 N Wolf Road (Comunity Church) to Appraise all your treasures what ever they may be.



8 Items per person You must be able to carry them in (Pictures, Jewelry, dishes, glassware) No Furniture or Rugs please. \$ 3.00 per item



Presented By Wheeling Historical Society

Information Call Joan Wiener
847-650-0144



Wheeling Historical Society 2012 Calendar

Wednesday, April 25

Election of Officers
*Antique appraisal by
Wheeling Sales Barn*
Cost \$3.00 per item

Wednesday May 23

Annual Installation Dinner
More information to follow

AN OLD WIVES TALE

When your mother told you to eat the crust of your bread, because it was good for you, she wasn't exaggerating! There are more antioxidants in the crust, than in the bread.

Wheeling's 1900 business district

Get Your Garden Growing

Perennials Geraniums Evergreens
Rose Bushes Seedling Flats

Fertilizers — Peat Moss — Mulches — Garden Supplies

You'll Like Our Quality and Prices!

HORVAT'S Flowers

4230 W. Dundee Rd.
CR 2-4563



STRYKER'S MEAT MARKET and home were side by side on the west side of Milwaukee Avenue south of Dundee Road. Ben Stryker cut ice from the river in the winter, and used it to keep meat fresh as he delivered it to farms for miles around.