



251 North Wolf Road • Wheeling, Illinois 60090

WHEELING HISTORICAL SOCIETY

APRIL 2011

Kilcoyne's Redwood Inn Celebrates 40 Years

Kilcoyne's Redwood Inn, located at 342 N. Milwaukee, recently celebrated their 40th anniversary. On Saturday, March 19, 2011, a group from the Wheeling Historical Society met at the restaurant to visit with and interview the owners.

Those who met with Joe Kilcoyne, Sr., and Joey Kilcoyne, Jr., to share stories of years ago, included Elaine and Geege Masterson of Hackney's; as well as the owners of Joe's Pizzeria; Pam Grutek, whose father, Wayne Ashe, sold the business to Kilcoyne; and other patrons who told stories they remembered about "way back when."

Others attending were Jackie and Mike Moran, along with WHS members Joan Wiener, Bill Hein, Patti and Terry Steilen, Elaine Simpson, and Marilyn Chromy. And while we celebrate

establishments such as Joe's Pizzeria and Kilcoyne's, who've been a presence here for so many years, we

must note that another restaurant is closing. Hackney's, located at 214 South Milwaukee in Wheeling for over 35 years, closes this location (only) on April 30, 2011. The owners and managers, Geege and Elaine Masterson are retiring. ~



Joe Kilcoyne, Bill Hein, Terry Steilen



Elaine and Geege Masterson



Mike Moran, Joey Kilcoyne, Bill Hein



April and May programs~

Wednesday, April 27: The Cycling Sisters return to talk about their bicycle tour through New England; a speaker from the Indian Trails Public Library will talk about the Reading Garden's engraved bricks; nominations and election of officers will be voted upon.

Wednesday, May 25: Our annual Installation Dinner ~ details to be announced ~

"The object of this Society shall be the discovery, preservation, and dissemination of knowledge about the Community of Wheeling."

**WHEELING
HISTORICAL
SOCIETY**

Located in the
Wheeling Park District's
Chamber Park
251 Wolf Road
Wheeling, Illinois 60090

Museum Hours

April through October
Sunday 2:00 – 4:00 p.m.

**2010–2011
OFFICERS**

President

Joan Wiener

Vice President

Bill Hein

Treasurer

Marilyn Chromy

Secretary

Charles Vallas

DIRECTORS

Barbara Forke

Patti Hancock

Becky Vogel



Curators

Patti Steilen, Curator
Donna Vallas, Assistant

Web Site

Terry Steilen

Newsletter Editor

Donna Vallas

This newsletter is
published monthly as a
benefit of membership



Wheeling Park District

Liaison

Cheri Klumpp
Commissioner



Message from the President

Dear Friends and Members,

April is here, but where is spring? Hope it's coming soon. Winter has been long.

The March meeting was held on Wednesday, March 23rd. We had a guest speaker, Eileen Halleck, from the Wheeling Pavilion Senior Foundation. She told us how the foundation works and that all the money that is donated to the foundation goes into things and projects at the Senior Center. So far they have purchased a new TV, Wii system and multiple pieces of furniture for the lobby area of the Senior Center. The Society voted and approved a donation of \$50.00 to the foundation.

A budget was approved for the upcoming Installation dinner. Discussion was held about getting new software called PastPerfect, for the museum. This software is designed for collections management in museums. We will be discussing this with the Park District Director in the very near future.

Terry Steilen, the head of the nominating committee, announced that he is working on nominees for the upcoming election at the April meeting. The amount of \$200.00 was approved for the program that is to be presented by the Cycling Sisters at the April meeting. Also approved was an award to Geege and Elaine Masterson from Hackney's, for their many years of service to the Village of Wheeling. That will be presented at the Installation Dinner in May.

The society would like to say Get Well Soon to Patti Hancock who has been in the hospital with respiratory problems. Happy Birthday late to Patti Steilen, Cheri Klumpp, and Elaine Simpson.

Hope to see you at the April meeting.

Historically Yours,

Joan Wiener, President



Happy Easter

Things to do and Places to go

North Eastern Illinois Historical Council (N.E.I.L) Events

April 16 & 17 Victorian Tea at the Palatine Historical Society

April 17 Music in the Museum: Concert by Sebastian Huydts & Elizabeth Newkirk, at the Glessner House Museum

April 20 Plant Medicine Past and Present, at the Elk Grove Historical Society

April 30 Mother-Daughter Tea at the Glessner House Museum

May 5 Spring Celebration & Plant Sale, Elk Grove Historical Society

May 14 Civil War 150th Anniversary, Elk Grove Historical Society

May 15 Cemetery Walk, Palatine Historical Society

Meeting Dates

April 2011

Board meeting
**Thursday
April 21**
7:00 p.m.

General meeting
**Wednesday
April 27**
7:00 p.m.

★ Visit our website at www.WheelingHistoricalSociety.com ★

Curator's Report

We had a very interesting day on Monday, March 24th. A young man named Michael Anthony was in town filming a documentary called "For Billy" and came for a tour of the museum. He interviewed myself and Bill Hein, with some added help from Linda Reading. It was fun to see just how a taping was done and we were excited to be part of this movie. I'll let you know when the movie is out and if it put on a DVD. The project took about 3 hours with a tour of all three buildings and ten minute interviews for Bill and I.

Joan and I opened the museum on April 3rd. We're hoping for many guests this season. Come in and see our new exhibit on Family Fest. We received many items from Kathy Pico, Judy Koller, and Becky Vogel. Our thanks to them for their generosity.

Joan and I went to the library to pick up items on the Civil War for a display. Chris Gibson was generous to loan the items from the library's display. We hope to have this display up in the next few weeks.

We received old ledgers, postcards, and letters about Al Fassbender, from the attic of a Wheeling resident. We'll be going through these items in the next month.

Patti Steilen
Curator



Time Marches On!

Just a reminder that dues for 2011–2012 are due in May

You can pay at the Installation Dinner or mail your dues with this renewal application

MEMBERSHIP APPLICATION

Name _____

Address _____

City, State _____

Phone _____ Zip _____

Check One:

Family Membership \$15.00

Individual membership \$10.00

Checks are made payable to: Wheeling Historical Society
P.O. Box 3, Wheeling, IL 60090

1926 Taxes for Wheeling Township

will be received on the dates and at the places noted below.

Peoples State Bank
March 12, 14, 15, 18, 19, 21, 22, 25, 26.

Every Wed. and Sat. Eve.
6:30 p. m. to 8:00 p. m.

Wheeling State Bank
March 9, 16, 23, from 9 a. m. to 3 p. m.

Mount Prospect, March 11.

Firnbach Store
March 17, from 9 a. m. to 12.

WM, WEBER, Collector.

See "Information to Tax Payers" on Other Side

Tax Rates for 1926

School District

Dist. No. 20	\$.54
Dist. No. 21	4.00
Dist. No. 22	2.75
Dist. No. 23	1.25
Dist. No. 24	1.35
Dist. No. 25	4.00
Dist. No. 26	1.63
Dist. No. 5775
State65
County91
Town17
Forest Preserve15
Village Mt. Prospect	2.42
Village Wheeling	2.04
Village of Arlington Heights	1.87
Road and Bridge77
Arlington Heights Twp.—	
Heights School	2.75
Non-High School40
Arlington Heights Water Works66
Arlington Heights Park Dist.25

1926 Taxes
for Wheeling
Township —85 years ago!

Wheeling FARM STAND MARKET



The Farmers Market opens
Tuesday, May 17, 2011

Volunteers are needed for
both Tuesdays from 9–3
and Saturdays from 9–1.

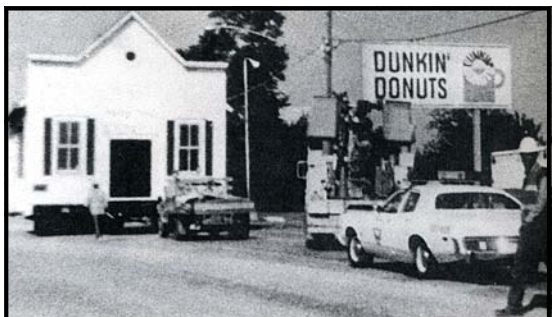
Contact Bill Hein or Joan
Wiener at 847-229-0151.

Meeting will be announced soon.

Did you know ...

The story behind the Wheeling Historical Society's mission statement?

The Village sold the original Wheeling Village Hall to the Park District in 1978, and the building was moved from 84 South Milwaukee Avenue to Chamber Park.



The subject came up—what to call the building? And what was the purpose of the Society?

At the time, Shirley Koeppen and Dana Benjamin were members of both the Wheeling Women's Club and the Wheeling Historical Society.

After some discussion it was determined that the building should be called the Wheeling Historical Museum, and giving thought to its purpose, Dana came up with the statement that we still use today:

“The object of this Society shall be the discovery, preservation, and dissemination of knowledge about the community of Wheeling.”

— Submitted by
Patti Hancock



Cook's Kitchen

Braided Easter Egg Bread

2-1/2 cups all-purpose flour, divided
1/4 cup white sugar
1 teaspoon salt
1 (.25 ounce) package active dry yeast
2/3 cup milk
2 tablespoons butter
2 eggs
5 whole eggs, dyed if desired
2 tablespoons butter, melted



In a large bowl, combine 1 cup flour, sugar, salt and yeast; stir well. Combine milk and butter in a small saucepan; heat until milk is warm and butter is softened but not melted.

Gradually add the milk and butter to the flour mixture, stirring constantly. Add two eggs and 1/2 cup flour; beat well. Add the remaining flour, 1/2 cup at a time, stirring well after each addition. When the dough has pulled together, turn it out onto a lightly floured surface and knead until smooth and elastic, about 8 minutes.

Lightly oil a large bowl, place the dough in the bowl, and turn to coat with oil. Cover with a damp cloth and let rise in a warm place until doubled in volume, about 1 hour.

Deflate the dough and turn it out onto a lightly floured surface. Divide the dough into two equal size rounds; cover and let rest for 10 minutes. Roll each round into a long roll about 36 inches long and 1-1/2 inches thick. Using the two long pieces of dough, form a loosely braided ring, leaving spaces for the five colored eggs. Seal the ends of the ring together and use your fingers to slide the eggs between the braids of dough.

Preheat oven to 350 degrees F. Place loaf on a buttered baking sheet and cover loosely with a damp towel. Place loaf in a warm place and let rise until doubled in bulk, about 45 minutes. Brush risen loaf with melted butter. Bake in preheated oven for 50 to 55 minutes, or until golden. ☼

*We're sending Get Well Wishes to all
our friends who are under the weather ~*

*Patti Hancock,
Shirley McConnell,
and Elaine Simpson*