



NEWSLETTER

WHEELING HISTORICAL SOCIETY OCTOBER 20, 2007



Message From The President

Dear Members and Friends:

Here we are in the middle of October, can you believe it? Where does the time go when we are having so much fun? Pretty soon the snow will be flying and we will all be eagerly awaiting spring. Right now its time to pull up and separate the bulbs, empty the flower pots and dream about next summer.

At the coming meeting of October 24th, we will have Officer Scott Larverd speak about identity theft. The program will be at 8 p.m. Wednesday at no fee. Everyone is welcome to join us. The meeting will be held at the Chamber Center, 251 N. Wolf Road.

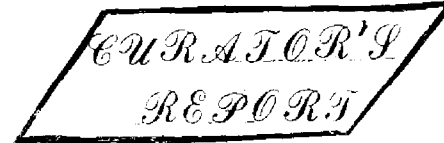
All members and friends please be made aware that the society has reprinted copies of "Wheeling Through the Years" and is available for \$25.00 per copy. Those of you living out of town wishing a copy, we will be happy to sent it to you for the price and postage.

Soon we will be planning for Lollipop Lane. Again, we will be looking for all the help we can get. Please keep it in mind and volunteer when you are called upon.

Hope to see you on the 24th at our next regular meeting at 7:30 p.m.

Elaine Simpson, President

Middle age is having a choice of two temptations and choosing the one that will get you home earlier.



MUSEUM UPDATE:

Beverly, Marilyn and I went to Omro on Monday August 27th to return the scrapbook we found in our archives to the local library there. We presented it to the head librarian as the board meeting was not until 4:30 p.m. and we had to get back. They were very grateful to get this book to go along with two other scrap journals they have, similar in style.

Ron Salski of the Park District was over to visit us to discuss any projects that are in need to be done and also any items we would hope to put into the coming budget.

We would like to thank the park district for the new light poles which have been installed in Chamber Park. They look great and give much needed light in the evenings.

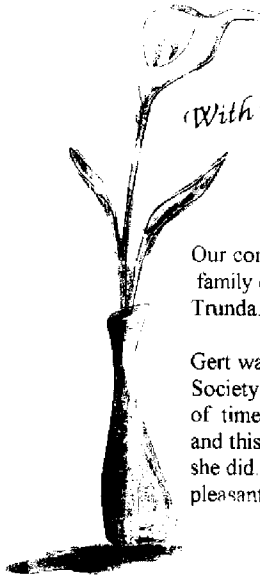
Jassamyn Miller, a student from the Architectural College in Chicago, came in for some pictures of commercial building architectural styles from 1935-1970 for a report she is doing for class. She is studying conservation architecture.

Marilyn and I have taken several pictures from the industrial areas of Hintz and Glenn Ave. and from Northgate Parkway to add to our building files.

We have volunteers to fill the rest of the Sundays until we close and we would like to thank all of our volunteers who have helped us throughout the summer to keep the museum open. We will be closed until March and again will be asking for your help.

On November 4th at 2 p.m. in Northbrook- Sight Appraisal Program with Frederick Dose. You need a registration form, if interested let me know.

Linda Reading, Curator



With Deep Sympathy

Our condolences go to the Trunda family on the passing of Gertrude Trunda. She will be sorely missed.

Gert was a long time member of the Society who gave more than her share of time and energy into this community and this society. We thank her for all she did. She leaves us with many pleasant memories.

A TRIP DOWN MEMORY LANE



Photos courtesy of Wheeling Historical Museum

In the early 1900s, Main Street in Wheeling—actually Milwaukee Avenue—had places for travelers to stop, rest and eat, among them the Chicago House. In the 1850s, the kegs from the Perolat brewery [right] were tapped for refreshment.



ON THE FUNNY SIDE!

Some Times it's good to be Blonde:

Last year I replaced all the windows in my house with those expensive, double-pane energy-efficient kind. Yesterday, I got a call from the contractor who installed them. He was complaining that the windows had been installed a whole year ago and I had not paid for them yet.

Hellloooo? Now just because I'm blonde doesn't mean that I am automatically stupid. So I told him just exactly what his fast-talking sales guy had told ME last year...namely, that in just ONE YEAR these windows would pay for themselves! Helllooooooo"? (I told him). "It's been a year"!

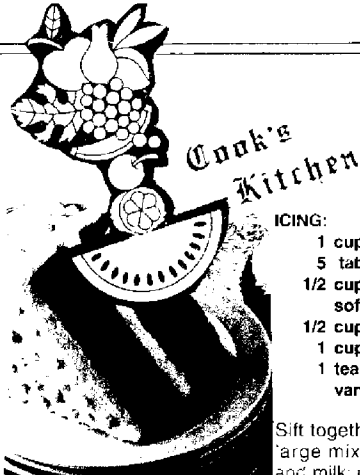
There was only silence at the other end of the line, so I finally just hungup... He hasn't called back, probably too embarrassed about forgetting the guarantee they made me.

Bet he won't underestimate a blonde anymore...



Pass this on to someone who could use a laugh.

Always remember to forget the troubles that pass your way BUT never forget to remember the blessings that come each day.



Moist Chocolate Cake (pictured above)

2 cups all-purpose flour
1 teaspoon salt
1 teaspoon baking powder
2 teaspoons baking soda
3/4 cup baking cocoa
2 cups sugar
1 cup vegetable oil
1 cup hot brewed coffee
1 cup milk
2 eggs
1 teaspoon vanilla extract

ICING:

1 cup milk
5 tablespoons all-purpose flour
1/2 cup butter,
softened
1/2 cup shortening
1 cup sugar
1 teaspoon
vanilla extract

Sift together all dry ingredients in a large mixing bowl. Add oil, coffee and milk; mix at medium speed 1 minute. Add eggs and vanilla; beat 2 more minutes. Pour into two greased and floured 9-in. cake pans (or two 8-in. cake pans and six muffin cups). Bake at 325° for 25-30 minutes. Meanwhile, for icing, combine the milk and flour in a saucepan; cook until thick. Cover and refrigerate. In a medium mixing bowl, beat butter, shortening, sugar and vanilla until creamy. Add chilled milk/flour mixture and beat for 10 minutes. Frost cooled cake. **Yield:** 12 servings.

TRIVIA... AROUND THE WORLD

Damascus, Syria, was flourishing a couple of thousand years before Rome was founded in 753 BC, making it the oldest continuously inhabited city in existence.

Istanbul, Turkey is the only city in the world located on two continents.

New York City: The term "The Big Apple" was coined by touring jazz musicians of the 1930's who used the slang expression "apple" for any town or city. Therefore, to play New York City is to play the big time.. The Big Apple. There are more Irish in New York City than in Dublin, Ireland, more Italians in New York City than in Rome, Italy and more Jews in New York City than Tel Aviv, Israel.

Wilderness: Percentage of Africa that is wilderness is 28%.

The percentage of North America that is wilderness is 38%.

#####

FROM THE HUSBANDS VIEW..

I asked my wife where she wanted to go for our Anniversary. "Somewhere I haven't been in a Long time!" she said. So I suggested the kitchen.

We always hold hands. If I let go, she shops.

She has an electric blender, electric toaster and electric bread maker.

She said "There are too many gadgets and no place to sit down!" ..so I bought her an electric chair.

My wife told me the car wasn't running well because there was water in the carburetor. I asked where the car was; she told me "In the lake."

She got a mud pack and looked great for two Days....then the mud fell off.

CHRONOLOGY **Guess the date!**

Wheeling's Literary Society produced the Comedy "Mr. Bob" in 1901, 1906, 1908

Chicago was film capital of the world in 1898, 1093, 1907.

Jacob Schwingel was again elected Mayor. Dr Francis Lillie bought the North farm in 1909, 1890, 1907

The Crane Foundation bought Buffalo Creek Farm. The Lillies start building Childerley. The log cabin was built in 1825, formerly used as pig pen on South Farm, is moved to Childerely for use as chapel.

There are 28 toll phones in service by the end of the year and Perolat Brewery was razed in 1880, 1906, 1910.

The Lillies' yellow brick residence on North Farm Burned in 1901, 1906, 1911.

ANSWERS: '1901' '0161' '6061' '8061' '2061' '9061

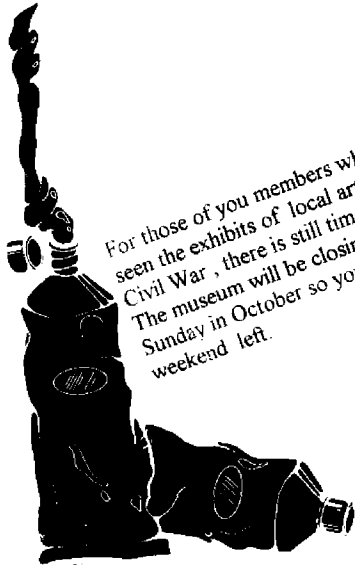
SICK LIST



TO ALL OF OUR FRIENDS AND MEMBERS WHO HAVE BEEN ILL OR IN THE HOSPITAL,

We wish you all health and happiness and hope you are are well or on the road to recovery.

We heard that Margaret Forke has had a little set back. We wish her well and hope she is on the road to recovery.



For those of you members who have not seen the exhibits of local artists and the Civil War , there is still time to join us. The museum will be closing the last Sunday in October so you have one weekend left.

Upcoming Meetings

- Regular mtg. Oct.24
- Lollipop Lane Mtg.
- No date as yet.

SOMETHING OLD!

Union Hotel

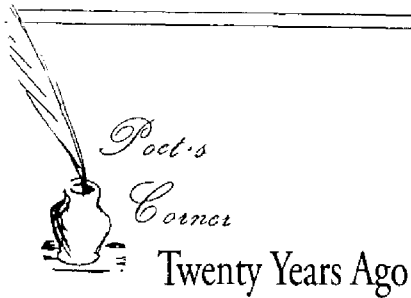


SOMETHING NEW!

Westin North Shore.



The object of this Society shall be the discovery, preservation and dissemination of knowledge about the community of Wheeling



I've wandered to the village, Tom, I've sat beneath the tree,
Upon the schoolhouse playground, which shelter'd you and me;
But none were there to greet me, Tom, and few were left to know.
That play'd with us upon the grass some twenty years ago.

The grass is just as green, Tom, barefooted boys at play,
Were sporting just as we did then, with spirits just as gay,
But the "master" sleeps upon the hill, which, coated o'er with snow,
Afforded us a sliding place, just twenty years ago.

The old schoolhouse is alter'd some, the benches are replaced
By new ones, very like the same our penknives had defaced;
But the same old bricks are in the wall, the bell swings to and fro,
It's music, just the same, dear Tom, 'twas twenty years ago.

The boys were playing some old game, beneath the same old tree.
I do forget the name just now; you've play'd the same with me
On that same spot; 'twas play'd with knives, by throwing so and so.
The loser had a task to do, there, just twenty years ago.

The river's running just as still, the willows on its side
Are larger than they were, Tom, the stream appears less wide;
But the grapevine swing is ruin'd now where once we play'd the beau,
And swung our sweethearts—"pretty girls"—just twenty years ago.

The spring that bubbled 'neath the hill, close by the spreading beech,
Is very low—'twas once so high that we could almost reach;
And kneeling down to get a drink, dear Tom, I even started so!
To see how much that I am changed since twenty years ago.

Nearby the spring, upon an elm, you know I cut your name,
Your sweetheart's just beneath it, Tom, and you did mine the same
Some heartless wretch had peel'd the bark, 'twas dying sure but slow,
Just as the one whose name was cut, died twenty years ago.

My lids have long been dry, Tom, but tears came in my eyes,
I thought of her I loved so well—those early broken ties—
I visited the old churchyard, and took some flowers to strew
Upon the graves of those we loved, some twenty years ago.

Some are in the churchyard laid, some sleep beneath the sea,
But few are left of our old class, excepting you and me,
And when our time is come, Tom, and we are call'd to go,
I hope they'll lay us where we play'd, just twenty years ago.

—Dill Armor Smith

100 YEARS AGO IN 1906.....

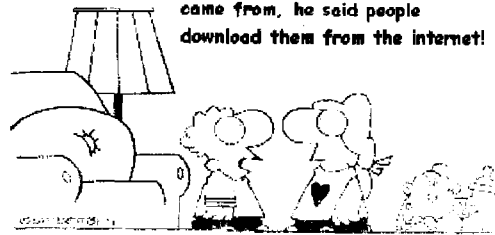
Only 6 percent of all Americans had graduated from high school

Marijuana, heroin, and morphine were all available over the counter at the local corner drugstores. Back then pharmacists said, "Heroin clears the complexion, gives buoyancy to the mind, regulates the stomach and bowels, and is, in fact, a perfect guardian of health!????!!"

Eighteen percent of households in the U.S. had at least One full-time servant or domestic help.

There were about 230 reported murders in the entire U.S.A.

I asked my dad where the children came from, he said people downloaded them from the internet!



IDLE THOUGHTS OF A RETIREE'S WANDERING MIND

I had amnesia once —or twice.

Protons have mass? I didn't even know they were Catholic.

I am neither for nor against apathy.

All I ask is a chance to prove that money can't make me happy.

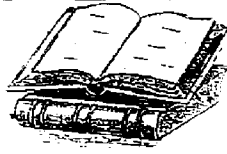
If the world were a logical place, men would be the ones who ride horses sidesaddle.

What is a "free" gift? Aren't all gifts free?

They told me I was gullible and I believed them.

Teach a child to be polite and courteous in the home, and when he grows up, he'll never be able to merge his car onto the freeway.

A Bit of History



Residents put Wheeling Parks On Top

By Martha Allen

Chicago Tribune, April 24, 1985

Community support is one reason why the Wheeling Park District is rated among the best park districts nationwide.

The district, which in 1978 won the National Gold Medal Award, a park district competition sponsored by the National Recreation and Park Association and the Sports Foundation, has 10 park sites totaling 232 acres.

"We've been blessed with a very supportive community that has allowed us to purchase property, to develop that property and to construct and maintain park facilities," says David Phillips, park district director. "Our golf course is certainly an example of that."

In 1977, voters overwhelmingly approved a \$3.7 million bond sale for the purchase of the 125-acre Chevy Chase Golf Course and Clubhouse at 1000 N. Milwaukee Avenue and the 10 acre Childerley Park retreat area at 506 McHenry Rd. The site of oldest building in the county, Childerley Park was developed by the park district in conjunction with the Wheeling Historical Society.

In the National Gold Medal Award competition, the district was judged on its activities and community programs, its master planning and the support garnered from village agencies and businesses. After presenting a scrapbook describing its activities and programs, it was judged the best park district serving a population of under 20,000 residents.

Renovating historic buildings, getting Commonwealth Edison Co. to provide free land allowing residents to plant vegetable gardens and working with the local high school to build a swimming pool are some of the park district's achievements. Also park district land is used for storm water detention to prevent basement flooding of Wheeling Residents

Continued.....



Turtles can breathe through their butts.

Butterflies taste with their feet.

In 10 minutes, a hurricane releases more energy than all of the world's nuclear weapons combined.

On average, 100 people choke to death on ball point pens every year.

On average, people fear spiders more than death.

Ninety percent of New York City cabbies are Recently arrived immigrants.

Elephants are the only animals that can't jump.

Only one person in two billion will live to be 116 or older.

Women blink nearly twice as much as men.

It's physically impossible for you to like your Elbow.

YOU KNOW YOU ARE LIVING IN 2007 WHEN.....

You accidentally enter your password on the microwave.

You haven't played solitaire with real cards in years.

You have a list of 15 phone numbers to reach your family of 3.

Your reason for not staying in touch with friends And family is that they don't have e-mail Addresses.

You pull up in your own driveway and use your Cell phone to see if anyone is home to help you Carry in the groceries.