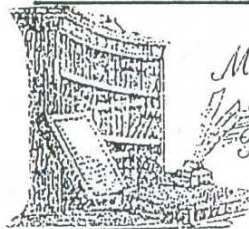




251 North Wolf Road • Wheeling, Illinois 60090

NEWSLETTER *May* NO. *02*

NEWSLETTER OF WHEELING HISTORICAL SOCIETY



*Message
From The
President*

Dear Members and Friends:

This will be my last newsletter to you as President of the Society. Thank you for the privilege of serving you.

It's been a fast four years and lots of things have been accomplished. A few new members - more visitors to the museum - bigger and better Lollipop Lane and our "Old Fashion Picnic." We collected three gallons of pop tops for Ronald McDonald House. Our February Buffet and Auction keeps getting bigger and more fun.

I sincerely wish to thank all of you who have helped me along the way. Elaine and her Board will do a great job for the Society and I'll give help when needed.

Remember our Dinner and Installation of Officers May 29th at the Compass Rose Restaurant. Hope to see lots of you there.

We are hoping that the bicycle built for two will be our entry in the 4th of July parade. "Hands across Wheeling" is the theme for this year. The Old Fashion Picnic will be held July 28st at Chamber Park. We had lots of fun last year, so we plan to do it again. Bring your lunch. The Society will provide the beverages and desserts. There is to be more planning on this.

Please sign up with Linda for your turn at the museum. We only ask for two hours a year on a Sunday afternoon. Thank you.

Thanks again for all your support duringf this trying illness.

Oh, please don't forget to save your pop tops during the summer.

Sincerely,

Lorraine Haben
President

WHEELING HISTORICAL SOCIETY BOARD MEMBERS 2002

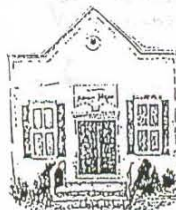
President...Elaine Simpson
Vice President..Marilyn Chromy
Secretary...Pat Hancock
Treasurer...Dolly Hein
Director..Frank Schnaitmann
Director..Eleanor Buerger
Director..Barb Forke

We are looking forward to serving you and it is hoped that much will be accomplished.

Thank you all for your support in the past and we look forward to the future.

Most of all we would like to thank Cheri Klumpp our Liaison to the Board of Park Commissioners and to the President, Board and staff for their support to this society.

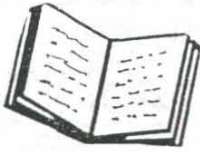
A special thanks to Mitch and his staff for the help they give us to make our lifes a little easier at the museum.



"The object of this Society shall be the Discovery, preservation and dissemination of knowledge about the community of Wheeling"

-W.H.S. Constitution-

A BIT OF HISTORY



PAL-WAUKEE AIRPORT Wheeling/Prospect Heights

Continued....

Resources: News Clips
Village Newsletter



In the 1990's Palwaukee started having an annual "Open House", which was a way to promote the community owned airport to it's residents and provided a unique close-up view of aviation and operations. It is a day of fun for both parents and children. Food, drawings, rides and planes on display for the public to view.

In 1998, Palwaukee Municipal Airport was given a 3.4 million improvement grant. The grant was to help fund a taxiway which gave the airport users an easier route to get on and off the main runway.

In 1999, the co-owners of the airport purchased 20 acres northeast of the airport where outdoor theaters once stood, to relocate an airport drainage ditch.

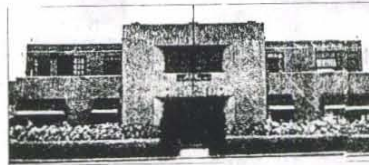
A 40 acre grass field with dirt runways has grown to more than 412 acres with paved runways and with a total of 190,000 take offs and landings in 1998, Palwaukee Municipal airport had transformed from a small rural landing strip to the State's third busiest airfield.

Today, the round the clock facility has an air traffic control tower manned by the FAA and is home to many more aircraft.

A problem presented itself at Wolf Road and Hintz Road in which aircraft approached the longest runway and drivers became upset with the aircraft flying and landing over the cars. A road project began which moved the traffic away from the runway in 1995.

The year 2000, brought more changes to the airport as the original 60 foot tower which was built in 1969 was demolished and a new tower stands at 118 foot at it's highest antenna and 88 feet at the viewing area.

Other buildings demolished were two of the American Fliers Flight Schools and the Hanger Restaurant, which was the Aviation Country Club. This served



the elite throughout the nation who stopped there when making cross-country stops at Palwaukee.

The airport received monies from the government in August of 2001 toward rebuilding the main runway. The work consists of widening the runway and placing it above the 100 year floodplain. Reconstruction began in October 26 of 2001.

The airport is serving more than 180,000 aircraft a year. Most corporate aircraft in Chicagoland use Palwaukee. This airport plays a major role in relieving congestion at area airports.

Palwaukee offers much for sightseers. At various times, a B-24 Liberator Bomber and a B-17 Flying Fortress have been on display. Also seen tethered at the north end of the airport a Met Life blimp or the Good Year blimp has been sighted.

4.

SCATTERED THOUGHTS



In May of 2001, a dozen fire departments, headed by Wheeling and Prospect Heights, converged on Palwaukee Airport to test their combined readiness for a possible airplane accident.



Chief MacIsaac said the objective of the drill was to test the incident command system in case of a disaster and checked the departments' ability to evacuate and treat people involved in an airport incident.

In February of 2002 it was noted that Palwaukee Municipal Airport will take over hosting U.S. Customs Services from a private company. The new lease agreement will station customs in the #2 hangar as previously stationed.

We are now in the year 2002, and since its inception, continual improvements and changes have taken place. With the addition of new companies, along with larger jet aircraft and hangers, the airport is still growing and who knows what the future will bring??

The End...or just the Beginning.....

REMEMBER WHEN.....

Mom was at home when the kids got home from school;

when nobody owned a purebred dog;

when a quarter was a decent allowance and another quarter a huge bonus;

when you'd reach into a muddy gutter for a penny;

when all of your male teachers wore neckties and female teachers had their hair done and wore high heels;

when you got your windshield cleaned, oil checked and gas pumped without asking, all for free, every time and you didn't pay for air and you got trading stamps or dishes to boot.



TIME MARCHES ON..

Just a reminder that dues for 2002-2003 are due in May.

You can pay at the Installation Dinner or mail it in with the enclosed Renewal Application.

MEMBERSHIP APPLICATION

NAME _____

ADDRESS _____

CITY, STATE, _____

PHONE _____ ZIP _____

CHECK ONE:

_____ FAMILY MEMBERSHIP \$15.00

_____ INDIVIDUAL MEMBERSHIP \$10.00

Checks are made payable to
Wheeling Historical Society
P.O. Box 3
Wheeling, Il. 60090

CURATOR'S REPORT

This year is the end of my second term as curator and I want to thank everyone who has been very supportive of me in providing help at the museum. It has been very informative and I have learned a lot more about our village.

I gave a short presentation about the history of Wheeling which included a video and some pictures to a class of 7th graders and also presented a program at the Senior Pavilion on May 2nd at their luncheon.

Two people requested information on Childerley Chapel which we provided. A teacher at Tarkington school is taking her class on a field trip on May 21st to the chapel.

When Sharon Schomer receives calls at the park regarding history, she turns them over to us.

Chris Gibson from the library has been taking pictures of cemetery grave markers in order to work on historical biographies of the people for the library's web site.

We still need help on Sundays at the museum, please sign up.

We have sold the last of the cook books.

Sincerely,

Linda Reading, Curator



UPCOMING MEETINGS

JUNE 19...Board Meeting
JULY 17...Board Meeting
AUG. 21...Board Meeting

NOTE: Board meetings are essential
June...Topic July 4th
July...Old Fashion Picnic
August...September Regular Mtg.



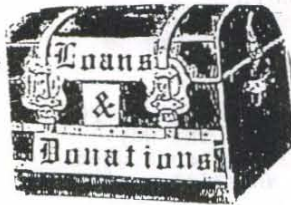
Cook's Kitchen

Chocolate Cherry Thumbprints

2 cups (12-ounce package) NESTLÉ TOLL HOUSE Semi-Sweet Chocolate Morsels, divided	¼ teaspoon salt (optional)
1¾ cups quick or old-fashioned oats	¾ cup granulated sugar
1½ cups all-purpose flour	½ cup butter or margarine, softened
¼ cup NESTLÉ TOLL HOUSE Baking Cocoa	2 eggs
1 teaspoon baking powder	1 teaspoon vanilla extract
	2 cups (two 10-ounce jars) maraschino cherries, drained and patted dry

Microwave 1 cup morsels in small, microwave-safe bowl on HIGH (100%) power for 1 minute; stir. Microwave at additional 10- to 20-second intervals, stirring until smooth. Cool to room temperature. Combine oats, flour, cocoa, baking powder and salt in medium bowl. Beat granulated sugar, butter, eggs and vanilla in large mixer bowl until smooth. Beat in melted chocolate. Stir in oat mixture. Cover; chill dough for 1 hour. Shape dough into 1-inch balls. Place 2 inches apart on ungreased baking sheet. Press deep centers with thumb. Place maraschino cherry into each center.

Bake in preheated 350°F oven 10 to 12 minutes or until set. Let stand 2 minutes; remove to wire racks to cool completely. Melt remaining morsels as above; drizzle over cookies. Makes 4 dozen.



We would like to thank the following for their generous donations:

Mrs. B. Jerina for 1 glass base lamp and 1 Telechron clock, 1 hand egg beater.

Marilyn Chromy, 1 1970 dress

Syke Horcher - 1 copy of his book "Wheeling Wonderland"

Dr. Wayne Gilbers - 1 overhead projector w/ supplies.

COMING EVENTS

NORTHBROOK HISTORICAL SOCIETY
Sunday September 15, 2002
Shermerfest 2002
Noon to 3 p.m.
Food, Games, antique/classic vehicles, etc.